



Email : [sales@scilabexport.com](mailto:sales@scilabexport.com)

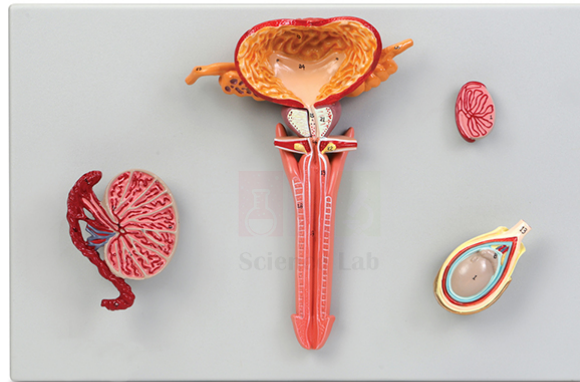
Phone: +91-7082934803

**Product Name :**

Human Male Reproductive System Model Set

**Product Code :**

SLE/A/84



## Description :

Mounted on durable polymer bases.

Includes numbered key with 25 identified structures.

**Size (each):** 50 x 26 x 8 cm.

This set of 4 plaque-mounted models illustrates the interior anatomy of the male reproductive tract.

The urinary bladder, prostate gland, and penis are sectioned longitudinally to reveal the internal features.

The testis is shown in 3 perspectives: in situ within a life-sized scrotum; as a life-sized longitudinal dissection; and as a 2x life-sized dissection with epididymis, seminiferous tubules, tunica albuginea, and other significant structures.