



Email : [sales@scilabexport.com](mailto:sales@scilabexport.com)

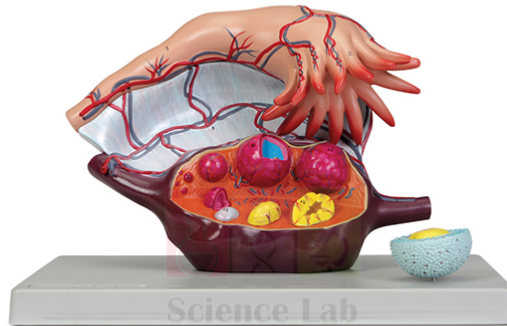
Phone: +91-7082934803

**Product Name :**

Human Ovary Model

**Product Code :**

SLE/A/70



## Description :

About 5x life size.

Includes numbered key.

**Size:** 33 x 23 x 21 cm.

Mounted on a durable polymer base.

An ovary with removable fallopian tubule shows vascular and suspensory structures.

The ovary is sectioned to show follicles at various stages of maturation, from the primary ovarian follicle to the corpus luteum and corpus albicans.

A primary follicle is cross-sectioned to reveal details of the oocyte and zona pellucida.

Contact Science Lab for your Educational School Science Lab Equipments. We are best scientific laboratory equipments manufacturer, scientific laboratory equipments supplier, technical educational equipment exporter, technical educational equipment manufacturer, technical educational equipment supplier, technical educational equipments exporter.

**Website:** <https://www.scilabexport.com>, **Email:** [sales@scilabexport.com](mailto:sales@scilabexport.com)

1226/1-5, Bengali Mohalla, Science Market | 133001, Harvana