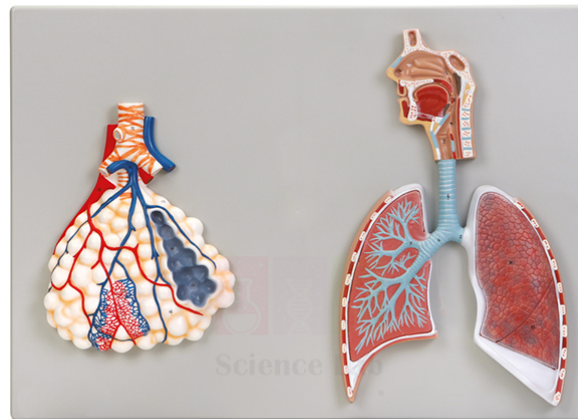


**Product Name :**

Human Respiratory System Model, 2-parts

**Product Code :**

SLE/A/38



**Description :**

Size: 53 × 38 cm.

Surface view of left lung shows superior and inferior lobes.

Structures are numbered and referenced on the accompanying key.

Two-part model shows respiratory airway structures from the nasopharynx to the terminal bronchioles of the right lung.

Highly magnified representation of pulmonary alveoli shows association with terminal bronchioles and capillary bed.

Contact Science Lab for your Educational School Science Lab Equipments. We are best technical educational equipments manufacturers, technical educational equipments manufacturer, technical educational equipments supplier, technical educational instruments, technical educational instruments exporter, technical educational instruments manufacturer, vocational training lab instruments exporter.