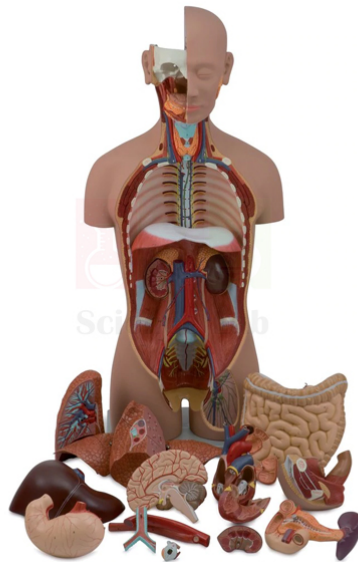


Product Name :

Human Sexless Torso Model

Product Code :

SLE/A/24



Description :

Dissectible into 16 parts.

Open dissections of neck and thigh reveal significant anatomical features.

Removable structures include half brain (sectioned longitudinally).

Eyeball, both lungs, 2-part heart.

Descending thoracic aorta and esophagus.

stomach; pancreas and duodenum, liver.

small and large intestines (one piece) with removable cecum.

Half of one kidney (sectioned along frontal plane).

kidney along with urethra and urinary bladder.

Mounted on reinforced polymer base.

Size: 90 x 33 x 23 cm.

Contact Science Lab for your Educational School Science Lab Equipments. We are best educational lab equipments manufactruers, educational lab instruments manufacturer, educational laboratory glassware exporter, educational laboratory microscopes, educational laboratory suppliers, educational scienitific lab equipments.