



Email : sales@scilabexport.com

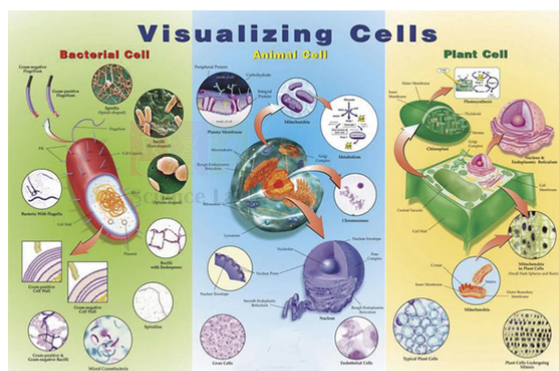
Phone: +91-7082934803

Product Name :

Visualising Cells Poster

Product Code :

SLE/ECB/17



Description :

Detailed illustrations and photography are perfect for instructing your class about the differences and similarities of bacterial, animal and plant cells.

This laminated poster graphically depicts the complex architecture of a cell membrane, golgi apparatus, nucleus and nuclear pores, endoplasmic reticulum, chloroplasts and mitochondria in an easy-to-see, easy-to-understand format.

Technical Specifications :

Dimensions: Size 890mm W x 585mm H.

Contact Science Lab for your Educational School Science Lab Equipments. We are best burette pinchclip medium wall supplier, chemistry lab equipments manufacturers, chemistry lab equipments manufacturer, education lab supplies, educational biology lab equipments, educational biology lab instruments.

Website: <https://www.scilabexport.com>, **Email:** sales@scilabexport.com

1226/1-5, Bengali Mohalla, Science Market | 133001, Harvana