



Email : sales@scilabexport.com

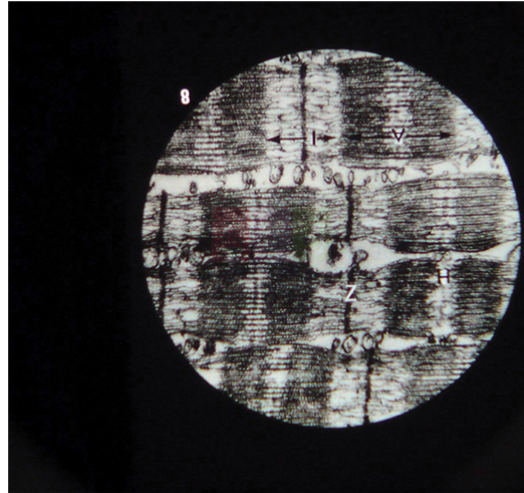
Phone: +91-7082934803

Product Name :

Microslide Ultra Structure of Animal Cells

Product Code :

SLE/PS/87



Description :

Microslides are sets of 8 related 35mm images as photographed through a microscope to be viewed through a Microslide Viewer.

Gland cells, Plasma cell, Nerve cell membrane, Golgi body and vacuole, Mitochondrion, Centriole, Lamp-brush chromosomes, Muscle cell fibrils.

Arrows and callouts help the students locate important features being studied.

Each text folder has a handy pocket to store the Microslides.

Accompanied by a detailed text folder designed to stimulate, inform and question the students about the topic.

Contact Science Lab for your Educational School Science Lab Equipments. We are best educational lab equipments manufacturers, educational lab instruments manufacturer, educational laboratory glassware exporter, educational laboratory microscopes, educational laboratory suppliers, educational scientific lab equipments.

Website: <https://www.scilabexport.com>, **Email:** sales@scilabexport.com

1226/1-5, Bengali Mohalla, Science Market | 133001, Harvana